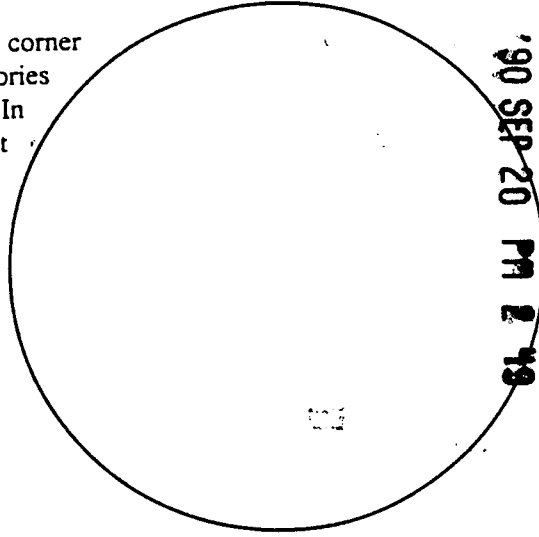


Wyoming Certified Land Corner Recordation Certificate

This form is to be completed in accordance with W.S. 36-11-101, printed in black ink or typed, and shall be for one individual corner.

Describe below, or show in sketch attached to this form, the corner evidence found. Include condition and type of monument, accessories and ties. Describe any maintenance or rehabilitation performed. In the circle to the right, show monument inscription. If monument is determined lost or obliterated, restate the GLO or BLM original field note record; describe or show the procedure used to reestablish the corner and all data as above for a found monument.



90 SEP 20 PM 2 49

075203
RECEIVED
LARAMIE COUNTY
CHEYENNE, WY.

Field Date 03/22/89 Office Reference S02-314E0988

Monument Inscription

ORIGINAL: From corner to Sections 25 & 36 on Township line, I run West on true line between 25 & 36. 40.47 chains to East line of Fort Russell Reservation bears North where I set a granite boulder 18 X 12 X 10 for corner to fract. Sec's. 25-36 2.06 chains North of a post on Reservation line 1/2 mile from the initial point.

FOUND: No corner monument was located at this corner. (See Note Attached-Sheet 2 of 3)

State of Wyoming
Office of County Clerk
County of _____

This Certified Land Corner Recordation Certificate was filed for record on the _____ day of _____, 19 ____, in Book No. T 14, R 67, on Alpha-Numeric coordinates V27 and was noted on the Cross Index Plat.

Janet C. Whitehead
County Clerk

Corner Type: Aliquot Corner Other
Section(s) 36 Meridian 6th Principal
Corner Name NW Corner of Township 14 Range 67 Page _____
Fractional Sec. 36 Sheet 1 of 3

**Directions for using the
Cross Index Plat**

Section, quarter and sixteenth corners will be marked with a dot at the corner location. The alpha-numeric coordinate number is then determined for the intersection of the two lines. A corner that applies to two or more townships shall be filed under all that apply by the use of photo copies.

Closing corners will be indexed under the township in which they control ownership. For 1/64, 1/256, 1/1024 and non-aliquot corners lying between grid designations, mark the appropriate grid area with a dot and use the index code to the north and west (local systems may be used if the method is approved by the County Surveyor or Clerk and a written description of its use is filed in the front of each book of certificates).

Cross Index Plat

	1	2	3	4	5	6	7	8	9	10	11	12	13	14	15	16	17	18	19	20	21	22	23	24	25
A																									
B																									
C		6																							
D																									
E																									
F																									
G		7																							
H																									
J																									
K																									
L		18																							
M																									
N																									
O																									
P		19																							
Q																									
R																									
S																									
T		30																							
U																									
V																									
W																									
X		31																							
Y																									
Z																									

State Plane Coordinates (optional)

Zone W WC EC E feet/meters

NAD 1927 NGVD 1929 NAD 1983 NAVD 1988

North (Y) = 174,863.08 East (X) = 590,780.47 EL = _____

Latitude _____ Longitude _____

Scale Factor _____ Geoid Height _____

Coordinates shown hereon are State Plane Surface coordinates based on Wyoming Highway Department control.

Certification

I, Robert W. Taylor, Wyoming PLS-3891 certify that I, or others under my supervision, have performed the work as described above and completed this form.

Company or Agency Eastern Wyoming Engineering & Surveying Professionals

Mailing Address P.O. Box 99

Street Address 2510 West C Street

City, State, ZIP Torrington, WY 82240

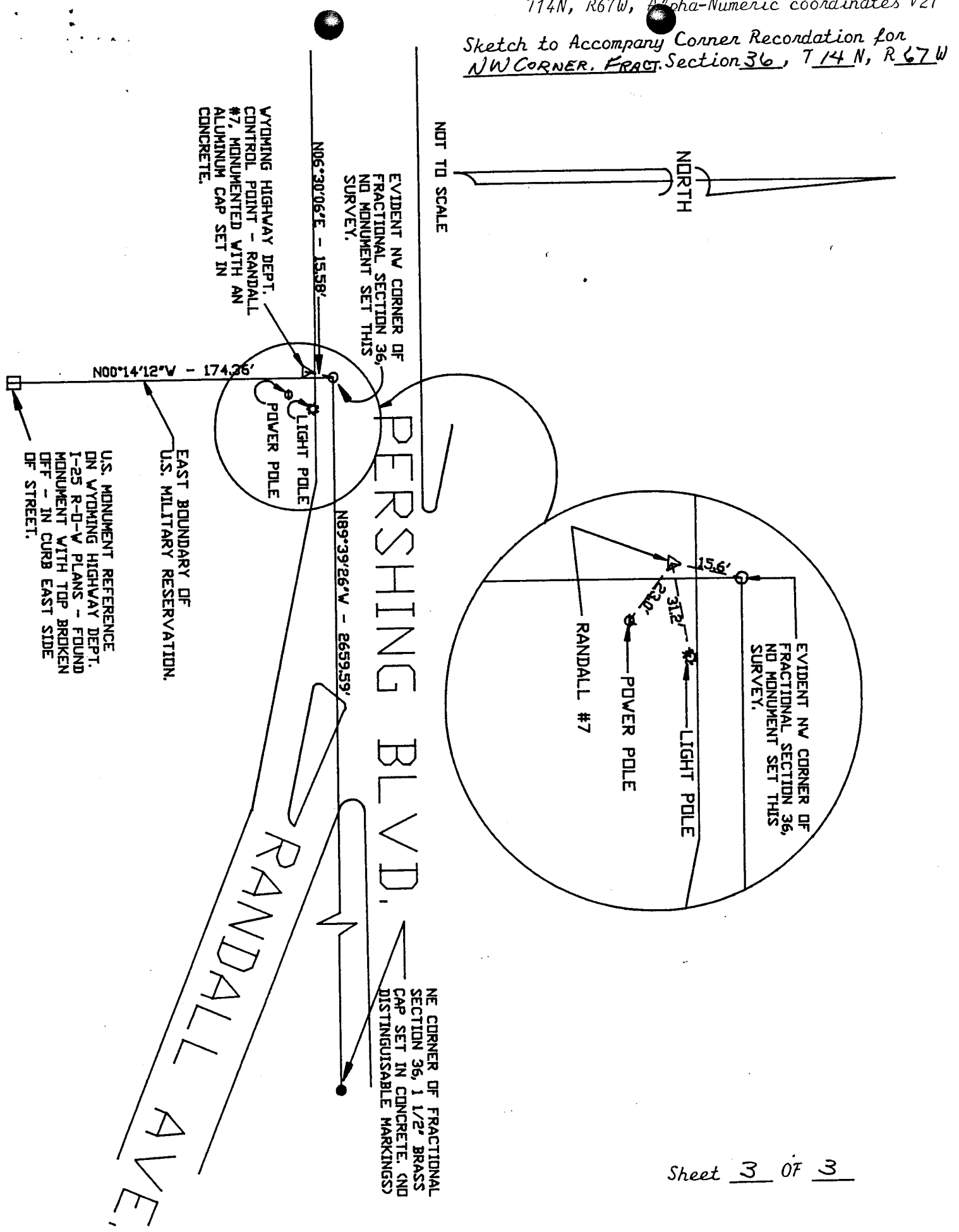
Telephone, FAX 307-532-3811 FAX 532-4868



Signature, Seal, and Date

Sheet 1 of 3

Sketch to Accompany Corner Recordation for
NW CORNER, FRACT. SECTION 36, T14N, R67W



WYOMING HIGHWAY DEPT.
CONTROL POINT - RANDALL
#7, MONUMENTED WITH AN
ALUMINUM CAP SET IN
CONCRETE.

EVIDENT NW CORNER OF
FRACTIONAL SECTION 36,
NO MONUMENT SET THIS
SURVEY.

N00°14'12"V - 174.36'

LIGHT POLE
POWER POLE

N89°39'26"V - 2659.59'

PERSHING BLVD.

NE CORNER OF FRACTIONAL
SECTION 36, 1 1/2" BRASS
CAP SET IN CONCRETE. (NO
DISTINGUISHABLE MARKINGS)

EAST BOUNDARY OF
U.S. MILITARY RESERVATION.

U.S. MONUMENT REFERENCE
ON WYOMING HIGHWAY DEPT.
1-25 R-D-V PLANS - FOUND
MONUMENT WITH TOP BROKEN
OFF - IN CURB EAST SIDE
OF STREET.

NOT TO SCALE

NORTH

EVIDENT NW CORNER OF
FRACTIONAL SECTION 36,
NO MONUMENT SET THIS
SURVEY.

RANDALL #7
POWER POLE
LIGHT POLE

15.6'

Sheet 3 OF 3



11

11

11

Note to Accompany Corner Recordation for
NW Corner of Fractional Section 36, T14N, R67W

The recommended reestablishment of this corner is based on physical and historical evidence of its position. The latitudinal position of the North line of Section 36 is well evidenced on the ground by boundary fences located in the Subdivisions adjacent to the South boundary of Pershing and is historically evidenced on the plat of "Park Addition to Cheyenne", "Holdrege Addition to Cheyenne", and the Amended plat of "Holdrege's Addition to Cheyenne". The North boundary of Section 36 is clearly referenced and defined on these plats. The plat of "Park Addition" shows several ties to the North boundary of Section 36 and the Northeast Corner of Fractional Section 36. We coordinated the physical evidence with these ties on the ground and then intersected this conclusion with the actual boundary of the Military Reservation as physically monumented on the ground for our proposed reestablishment of the Northeast corner of Fractional Section 36. The actual corner falls in the pavement of Randall Avenue and is not physically monumented this survey, however it is perpetuated by reference monuments as shown on attached sketch.

Fractional Section 36 as originally surveyed and platted consists totally of Lots (Lots 1 through 6) and is bounded on the West by the U.S. Military Reservation. A triangular shaped tract, the Original Townsite of Cheyenne as surveyed and platted by the G.L.O. first in July of 1870 and again later in December 1872, intrudes the Eastern portion of the Section. The instructions, field notes, and plats of all of these surveys are vague. Therefore, the exact original intent of the lotting (lot line location) is unclear in some areas of fractional Section 36. In our re-survey, we have made every effort to follow the original survey. However, the area is highly developed and populated and there is a lot of conflicting evidence. The exterior boundaries of the Section are fairly well defined, but the interior subdivision of the section holds the potential for numerous boundary quandaries.

